



WHO WE ARE

Proscan Dental Lab is a cutting edge dental lab and milling center that embraces the latest technologies in digital dentistry.

We know that innovation is key to success in our industry today. Our unique vision and approach ensure our work and service are to the very highest standard. We keep up-to-date with the latest technological developments in the world of digital dentistry.

We offer a full line of CAD/CAM services, including implant abutment and Zirconia 5-axis milling. These technologies allow us to fabricate any type of restorations while utilizing digital processes for extreme accuracy and consistency. This accuracy is significantly enhanced when the dentist utilizes an Intra-Oral Scanner.

We are trained and equipped in multiple CAD/CAM systems enabling us to transfer your digital impression files directly to a design computer where we can create your copings and your 3D model!

If you would like to find out more, consider giving TCI - Proscan Dental Lab a try with your digital impressions, we would love to share our experience with you.

*Our World Continues to Change
Our Passion Remains the Same*



Scheu-dental - IMPRIMO® LC

TCI - Proscan Dental Lab is expertly qualified to assist clinicians who utilize digital impression systems.

We accept digital impression files from all the major intraoral scanners: 3shape, Medit, Sirona, iTero, Carestream, Planmeca, 3M, Dental Wings...

Our goal is to reduce complexity and simplify the workflow for dental professionals – because by doing so, both the efficiency and accuracy of dental procedures are increased.



For systems that utilize proprietary connection portals like 3shape communicate or Medit Link, the data are sent to our Laboratories through the selection of TCI DENTAL as a partner laboratory. For open systems, clinicians can download the scan data from their impression unit and transfer it directly to us through our “My Account”.



Where Strength Meets Esthetics...



Doceram Zirconia - Made in Germany



MULTILAYERED FULL CONTOUR ZIRCONIA

Multilayered refers to color changes in gradual, natural-looking layers that pass right through the material. Ideal for posterior crowns and bridges with a high strength translucent and esthetic, milled to full contour, with NO porcelain layering.

ZIRCONIA CROWN AND BRIDGES

Provides your patients with a **German Doceram Medical Ceramic** for a high-quality esthetic restoration. The Zirconia used is naturally translucent and pre-colored, blending flawlessly with the patient's existing dentition.



Beautifully Nature Smile



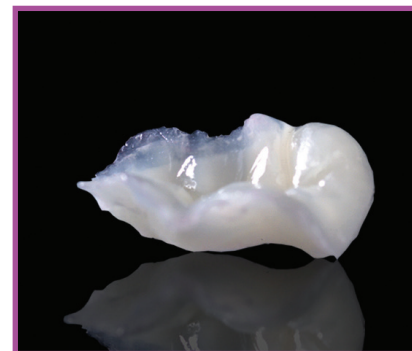
Ivoclar Vivadent Emax - Made In Germany



IPS E-MAX PRESS: (LITHIUM DISILICATE GLASS CERAMIC)

The Press technique has been successfully used to fabricate Crowns, Veneers and Inlay-Onlay. The restoration can either be Characterized or Built-up.

IPS e.max® press can deliver the ideal restorations. With high esthetics that provide opalescence, translucency and brightness, IPS e.max® allows you to restore the patient's smile that delivers the ultimate in esthetics and strength.



The Foundation Of Strength & Durability



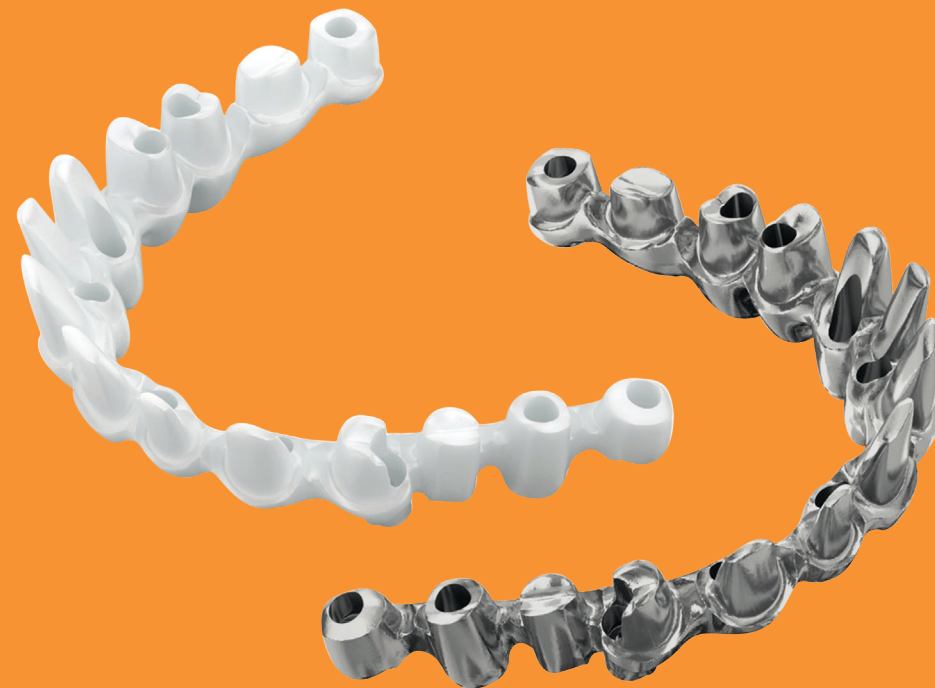
Eisenbacher Dentalwaren - Made In Germany

PFM: (PORCELAIN FUSED TO METAL)

While metal-free restorations are increasing in popularity, porcelain-fused-to-metal (PFM) options remain tried-and-true choices for restorative success based on their strength and esthetics. To ensure a high degree of marginal integrity and consistency in PFM substructures, TCI - Proscan Dental Lab utilizes digital CAD/CAM design technology. This achieves greater accuracy even before our ceramists add layers of artistic porcelain, guaranteeing final results that continually exceed your expectations.



When Custom-made Becomes The Standard



As part of our in-house development TCI - Proscan Dental Lab offers the greatest flexibility from standard to customized solutions for your restorative implant needs. Through the use of the CAD/CAM, each abutment is individually designed from the final tooth shape for a more natural esthetic result, produced from a state-of-the-art milling process to ensure highest precision and quality - every time.

CUSTOM-MADE ABUTMENT

Manage costs without sacrificing quality abutments are available for more than 50 platforms from 10 major implant manufacturers, including Straumann®, Zimmer, Nobel Biocare®, reduce inventory management, and chairside modifications while bringing simplicity and profitability to the dental practice.

STANDARD IMPLANT ATTACHMENT SOLUTIONS

In cooperation with international well-known implant companies, TCI offers a complete panel of proven standard components offering an excellent quality-to-price ratio, compatible with the main implant systems.



COCR-BASE

Laboratory cylinders in Cobalt chrome allow the possibility for over-casting of non-precious alloys offering an aesthetic and economical solution for screw-retained single and multi-unit prosthetic restorations.

*Where Creativity
Meets Technology*



TI-BASE HYBRID SOLUTION

Interface abutments in titanium offer the possibility to realize single and multi-unit aesthetic screw-retained restorations in press-ceramics, zirconia or non-precious dental alloys.

SCREW-RETAINED CROWNS AND BRIDGES

The demand for single and multi-unit screw-retained solutions is increasing rapidly due to the simplicity with regards to long-term maintenance of the prosthetic restorations and the elimination of the risk of subgingival cementation causing implant failure.



ANGULATED SCREW CHANNEL ABUTMENTS

Bring screw-retained access into the anterior with TCI - Proscan Dental Lab abutments, which offer access up to 25 degrees from the implant trajectory.

CUSTOM BARS

Implant Removable Denture (with locators attachment over a titanium bar).
Implant Removable Denture (with Hader clips over titanium bar).

Making Top Quality Dentistry Affordable

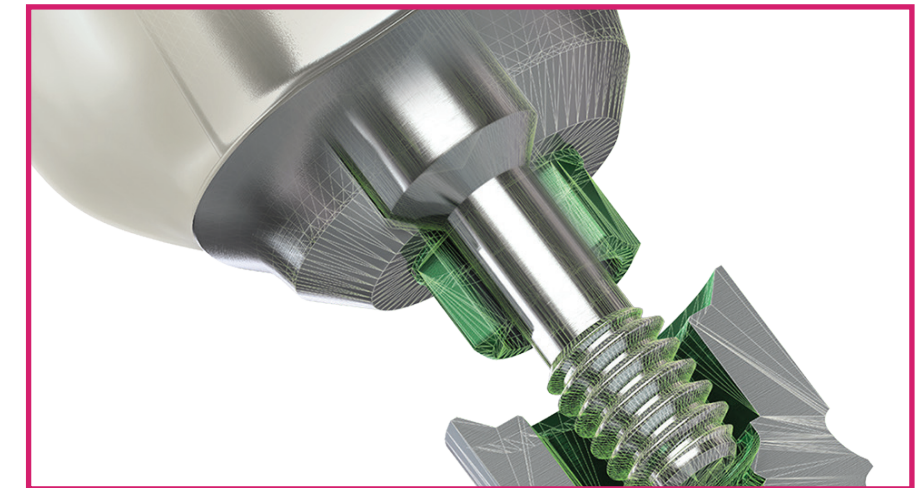


In cooperation with international well-known implant companies, TCI offers a complete panel of proven standard components providing its customers with an opportunity to choose from a wide variety of dental attachments, CE and FDA Certified, offering an excellent quality-to-price ratio that meets all requirements.

The wide range of our product line has compatible connection systems with the majority of implants available in the market:

PRODUCTS

- Analog
- Cr-Co Bases + Castable Plastic
- Castable Plastic Sleeve
- Healing Abutments
- Screws
- Temporary Abutments
- Ti Bases
- Titanium Abutments



COMPATIBILITIES

- Biomet 3i® Certain®, Osseotite®
- ASTRA TECH™ Aqua®, Lilac®, UniAbutment®
- Dentsply ANKYLOS® C/X, FRIADENT® XiVE®
- BioHorizons®
- Brånemark System®, NobelReplace®, Replace Select™, NobelActive™, NobelReplace®
- ITI®, Straumann® Soft Tissue Level, Straumann® Bone Level®, SynOcta®
- Zimmer Screw Vent®, SwissPlus®
- Locator® is a registered trademark of Zest IP Holdings LLC.

Digital Dentistry is our Specialty



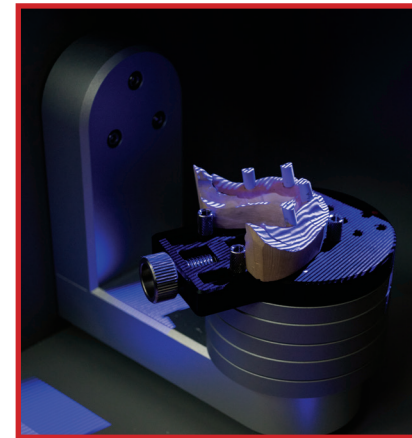
TCI - Proscan dental lab, guarantee that all the raw materials used in the production of our prostheses are marked "CE".

All our manufactured prostheses meet the essential health and safety requirements in accordance with the European directive 93/42 / CEE.

OUR TECHNOLOGY

SCANNERS

- 3shape
- Dental Wings
- Medit
- Imetric



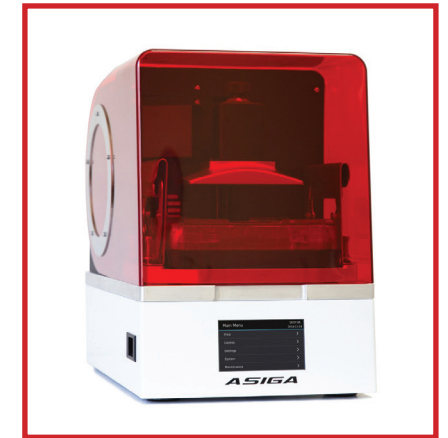
MILLING MACHINES

- 4 Machines (CNC 5-Axis)



3D PRINTERS

- 2 Asiga Max UV



MILLING SERVICES FOR DENTAL LABORATORIES

SERVICES

- Scan, Design And Mill From A Master Model
- Accept STL Files From All Major Scan Systems

PRODUCTS

- Customised Abutments
- Screw Types Crowns and Bridges
- Implant Bar
- Temporary Crowns and Bridges
- Hybrid Abutments
- Zirconia Single And Multi-Unit Frameworks
- Metal Single And Multi-Unit Frameworks

MATERIALS

- Zirconia Shaded
- Zirconia Multilayer
- Chrome-Cobalt
- Titanium
- Emax
- PMMA
- Wax

OUR PARTNERS

